

Healthcare Science Career of the Week



Physician Associate

Area of HCS: Medical Associate Professions

Pay Scale:
£38k - £55k+
Band: 6 - 8a



Scan me to
see up
to date pay
scales!

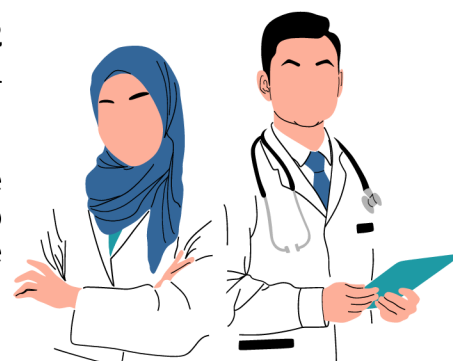
As a physician associate you'll be working in a hospital or GP surgery and have direct contact with patients. You'll be trained to take medical histories, perform examinations, diagnosis illnesses, analyse test results, deliver treatments and make home visits. That's right, you get to meet and treat patients!

You'll need good communication skills as you'll be meeting new people all the time, plus as this is a new role there is little public knowledge of what your job is so it's up to you to explain to them! Training takes 2 years and is very intensive, but you'll get a lot of hands on practice and get to experience what it's really like to work in the NHS.

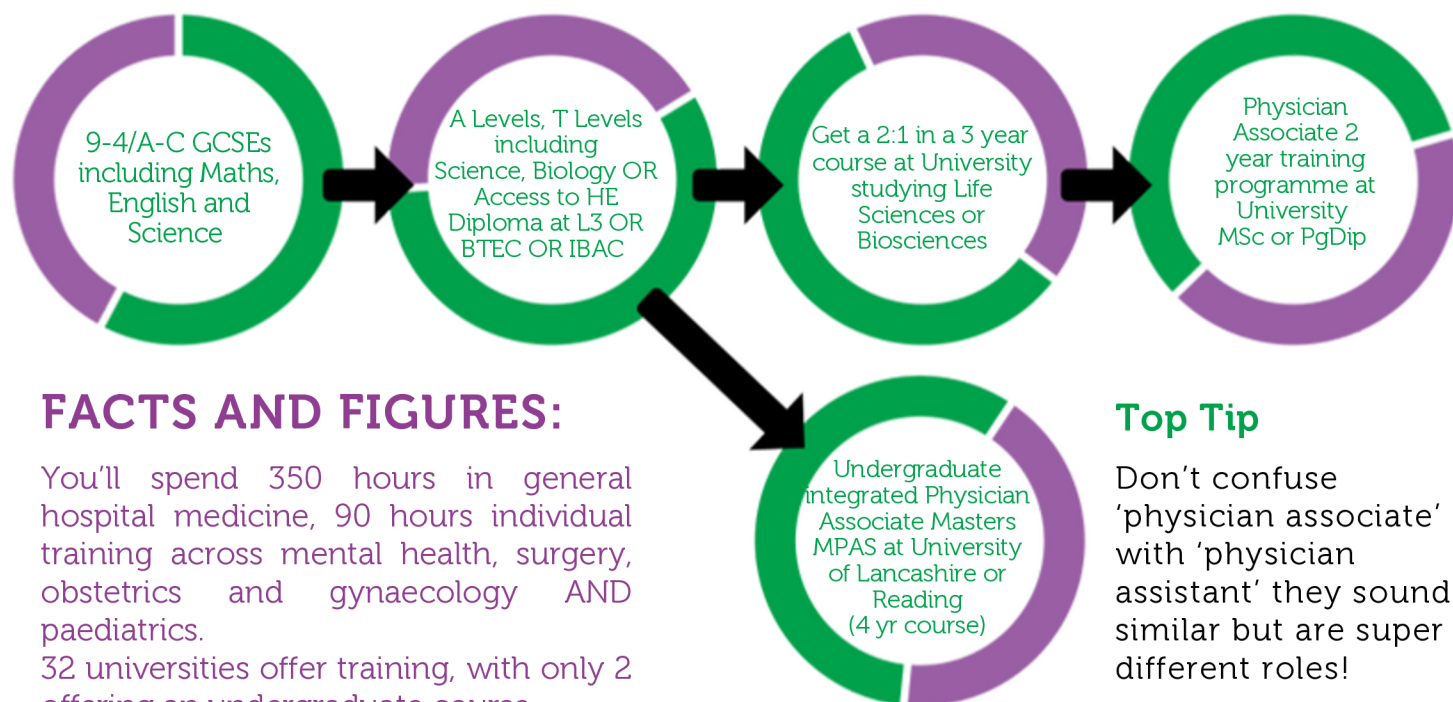
You'll become specialised in general adult medicine, and the experience is similar to what trainee doctors go through. This can be a tough job with a large pressure from patient workload, but you get the opportunity to make a real difference to patient lives.

AMAZING FACT:

This is a relatively new role in the NHS, before 2015 there were NO physician associates at all! Take the opportunity to try something new and exciting, who knows where this role will lead...



What to do to get into this career...



Socials for more science!



@MedicMavericks



@MedicalMavericks



@medical_mavericks



@MedicalMavericks